

Bilinch

**INTELLIGENT ROBOTIC WELDING SOLUTIONS
FOR HIGH-MIX STRUCTURAL STEEL PRODUCTION**

+AI


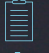


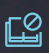




**THE NEW STANDARD IN
STRUCTURAL STEEL FABRICATION
BEYOND AUTOMATION. TOWARDS AUTONOMY.**



intecroroboticwelding.com


NO NEED FOR

-  No Human Intervention Needed
-  CAD-less Processing
-  No Need for Part Fixtures
-  No Programming
-  No Teaching
-  No Collisions, No Calculations
-  No Setup for Welding Parameters (*)

Intelligence That Builds

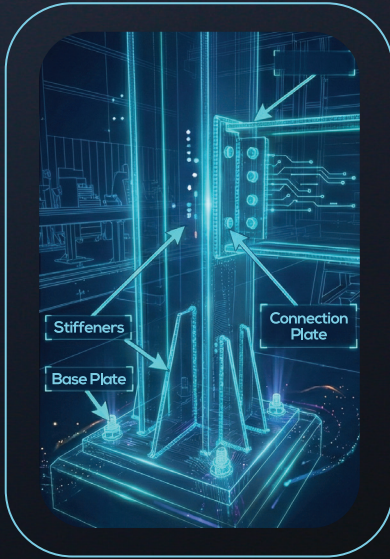
Forget manual teaching and offline programming software. **Bilinch**[®] transforms structural steel fabrication into a seamless "Scan-to-Weld" experience. Designed specifically for high-mix, low-volume production, it allows operators to weld unique beams and complex assemblies with a single click.

AVAILABLE TECHNOLOGIES

-  Automatic Workpiece Scanning
-  3D Digital Twin Generation
-  Hybrid Sensor Technology
-  Touch Sense Alignment
-  Through-Arc Seam Tracking (TAST)
-  Multi-pass Welding
-  Automatic Collision Detection
-  Part Recognition up to 2 Meters in Height
-  AI-assisted Welding Parameter Optimization (*)
-  AI-assisted Area Planning (*)
-  Auto Robot Programming

*(Available Soon)

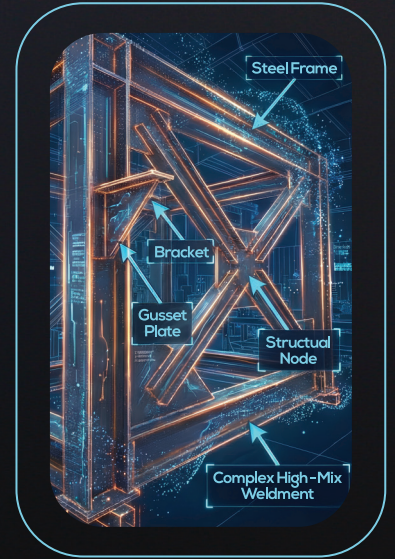
Applications



BEAMS & COLUMNS



PROFILES



ASSEMBLIES

The Brain Behind the Beam.

info@intecro.com.tr

intecroroboticwelding.com

+90 850 223 0 468 (INT)

+1 (630) 948-8221

ANKARA - VIA TOWER MANAGEMENT - MARKETING - SALES OFFICE

ANKARA - YENİ BATI ADMINISTRATIVE OFFICE

ANKARA - EMAI MANUFACTURING - ENGINEERING CAMPUS

CHICAGO - TTC USA SALES - SERVICE OFFICE

Söğütözü Mah. Nergiz Sokak No: 7/32
Yenimahalle 06560 Ankara/TÜRKİYE

Yeni Batı Mah. 2400 Sokak No: 13
Yenimahalle 06370 Ankara/TÜRKİYE

Sarayosb Mah. Uzun ve Havaçılık OSB
NO: 187AA K.Kazan 06980 ANKARA

11417 Irving Park Rd. Franklin Park
60131 Illinois USA